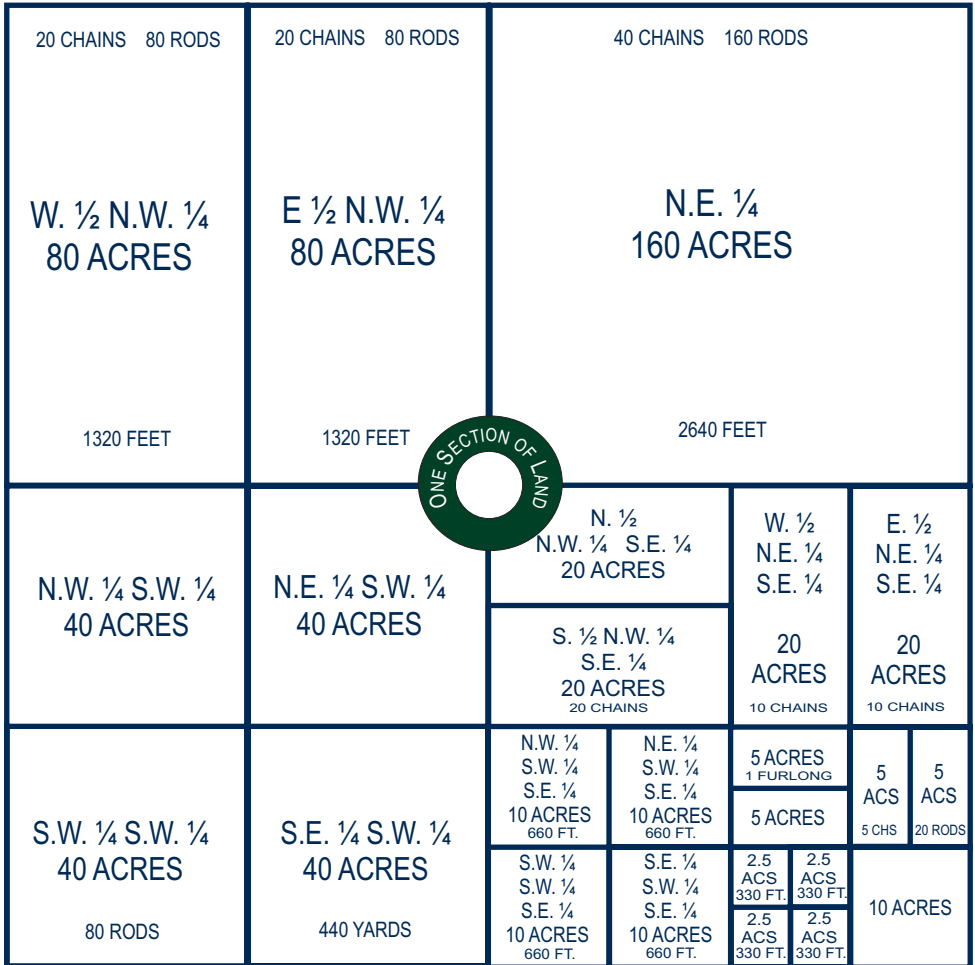


S M I T H | H A R T V I G S E N PLLC

ATTORNEYS AT LAW



ONE SECTION OF LAND CONTAINS ONE SQUARE MILE OR 640 ACRES

- 1 LINK = 7.92 INCHES
- 1 ROD = 5.5 YARDS = 16.5 FEET = 25 LINKS
- 1 CHAIN = 4 RODS = 66 FEET = 100 LINKS
- 1 FURLONG = 40 RODS = 660 FEET
- 1 MILE = 8 FURLONGS = 80 CHAINS = 320 RODS = 5280 FEET
- 1 SQUARE ROD = 30 1/4 SQUARE YARDS = 272 1/4 SQUARE FEET
- 1 ACRE = 160 SQUARE RODS = 43,560 SQUARE FEET (208.7 x 208.7)
- 1 ACRE IS 8 RODS x 20 RODS (OR ANY TWO NUMBERS OF RODS WHOSE PRODUCT IS 160)



(This information is provided "as is" without any express or implied warranty of accuracy.)

S M I T H | H A R T V I G S E N PLLC

ATTORNEYS AT LAW

WATER CONVERSION CHART

VOLUME	gallons	cubic feet	acre feet	million gallons
One gallon equals	1	0.1337	0.00000307	0.000001
One cubic ft equals	7.48051	1	0.00002296	0.0000075
One ac-foot equals	325,851	43,560	1	0.32585
1 M gallons equals	1,000,000	133,680	3.0689	1

FLOW	gallons	cubic feet	acre feet	million gallons
One gallon per minute equals				
Second	0.01666667	0.002228	---	---
Minute	1	0.13368	0.0000031	0.000001
Hour	60	8.0208	0.00018	0.000060
Day	1,440	192.5	0.00442	0.001440
30-day month	43,200	5775	0.1326	0.043200
365-day Year	525,600	70,262.5	1.613	0.525596

One cubic foot per second equals				
Second	7.48051	1	---	---
Minute	448.83	60	0.0013771	---
Hour	26930	3600	0.082625	---
Day	646,315	86400	1.983	0.6462
30-day month	19,389,450	259,200	59.5	19.386
365-day Year	235,904,975	31,536,000	723.97	235.9

One acre-foot per year equals				
Second	0.01033	0.00138	---	---
Minute	0.62	0.083	---	---
Hour	37.198	4.973	0.0001142	---
Day	892.7425	119.343	0.00274	0.00089
30-day month	26,782	3,580	0.0822	0.02678
365-day Year	325,851	43,560	1	0.32559

One million gallons per day (MGD) equals				
Second	11.5741667	1.54721667	0.00004	---
Minute	694.45	92.833	0.0021	0.0007
Hour	41,667	5570	0.127875	0.04167
Day	1,000,000	133,680	3.069	1
30-day month	30,000,000	4,010,400	92	30
365-day Year	365,000,000	48,793,200	1,120.147	365

Note: Irrigation season of April to October (183 days), April through October (213 days.)

CONSUMPTIVE USE/ SOURCE REQUIREMENTS

Est. peak use in gallons per day	Culinary	Waste-water
Per Equivalent Residential		
Connection: ERC	800	400
High School Student	25	25
Hotel Guest	150	125
Hospital Bed	250	250
Recreational Home	400	400
Skier	10	5
Restaurant Seat	35 - 50	35
Tavern or Bar Seat		2
Swimmer*	10	

* Calculate swimming pools using water surface area as follows: 20 x Water Area (F12) / 30OE + Deck Area (F12).

Sources: Utah Admin. Rules R309-510-7 and R317-5-1.

Estimated Annual Use

	acre feet	gallons
Per Family	0.045	14,663.3
Cow or Horse	0.028	9,123.8
Pig, Sheep, Elk, Goat, or Moose	0.0056	1,824.8
Ostrich or Emu	0.0036	1,173.1
Llama	0.0022	716.9
Deer, Antelope, Mt. Goat/Sheep	0.0014	456.2
Chicken, Turkey or Sage hen	0.00084	273.7
Mink or Fox (caged)	0.00005	16.3

Source: Utah Div. of Water Rights

DUTY VALUES - Requirement of water per irrigated acre in these areas or counties.

(Duty is the total amount of water used for irrigation expressed in acre-feet per acre. The duty is equivalent to the consumptive irrigation requirement plus the return flow.)

3 acre-foot duty per acre

West Box Elder, Daggett, Rich, Southern Cache and Summit Counties and the Upper Sevier River Drainage

4 acre-foot duty per acre

Beaver, Iron, Millard, Tootle, Northern Cache, and Utah Counties and the Lower Sevier River Basin and South of the San Juan River.

5 acre-foot duty per acre

Salt Lake County, Kanab and Johnson Creek in Kane County, and East of Green/Colorado Rivers in Grand and San Juan Counties.

(This information is provided "as is" without any express or implied warranty of accuracy.)

215 South State Street
Suite 650
Salt Lake City, Utah 84111



T 801.413.1600
F 801.413.1620
www.smithhartvigsen.com